

MEPA



MEPA nextVIT

The pre-wall system that's big on details

MEPA – better in detail

powered by
REHAU



6 strong reasons for MEPA

1. Powerful performance – for bathtub and pre-wall installation.
2. Quality made in Germany that you can trust.
3. Easy to handle due to clever details.
4. Flexible options for satisfied customers.
5. Solutions that competitors do not have.
6. An experienced partner at your side.

MEPA – better in detail

nextVIT at a glance

The system	Page
A complete system of better details	4 – 5
nextVIT pre-wall frame with EasyConnect concept	6 – 9
nextVIT cistern	10 – 13
nextVIT Air-WC and flushing systems	14 – 15
Flexible connection of shower-WC systems	16 – 17
nextVIT flush plates with EasyConnect mounting	18 – 21
One standard element for all installation variants	22 – 23
nextVIT rail system – pre-fabrication and on-site installation	24 – 25
Barrier-free solutions	26 – 27
 Technical overview	
nextVIT WC frames	32 – 33
nextVIT washbasin frames	34 – 35
nextVIT urinal frames	36 – 37
nextVIT barrier-free elements and components	38 – 39
nextVIT bidet element	40 – 41
nextVIT installation accessories	42 – 47
nextVIT planking and soundproofing	48 – 49
 Service	 50 – 51

nextVIT – A new approach to pre-wall installation

You know MEPA as a pioneer in the industry that has been supplying discerning installers with innovative products for bathtub installation and pre-wall installation for decades. This also includes MEPA nextVIT: a new generation of pre-wall installation with even more details for faster, easier handling. Inspired by the exchange of knowledge with installers and oriented towards what they need. The clever alternative for all those who prefer not to go with the flow.

MEPA – better in detail.

That is why MEPA nextVIT is worthwhile:

» A new generation of easy installations

Many better details that save time and effort, much easier installation on walls and floors and other clever ideas make installation with nextVIT particularly convenient.

» EasyConnect - click and snap in place

In many procedures, we now let you simply click instead of screw - our enhancement of tool-free assembly. Snap in instead of flip out: Typical MEPA.

» High flexibility in use for faster work

nextVIT elements fit particularly easily to any existing drinking water and wastewater pipe system. The flushing technology can be freely selected; hygienic flushing works with any cistern. And you install electronic components simply by plug-and-play.

» Wide choice and elegant design in front of the wall

In front of the wall, nextVIT lets you score points with customers and tenders with a wide range of WC flush plates and urinal flush systems with different functions.

» Safety and quality from Germany

The entire nextVIT system is 100 percent MEPA, made in Germany. This ensures the long-term reliability you need for permanently satisfied customers. at a fair price that is worth comparing.



Install more faster? **Easy with nextVIT!**

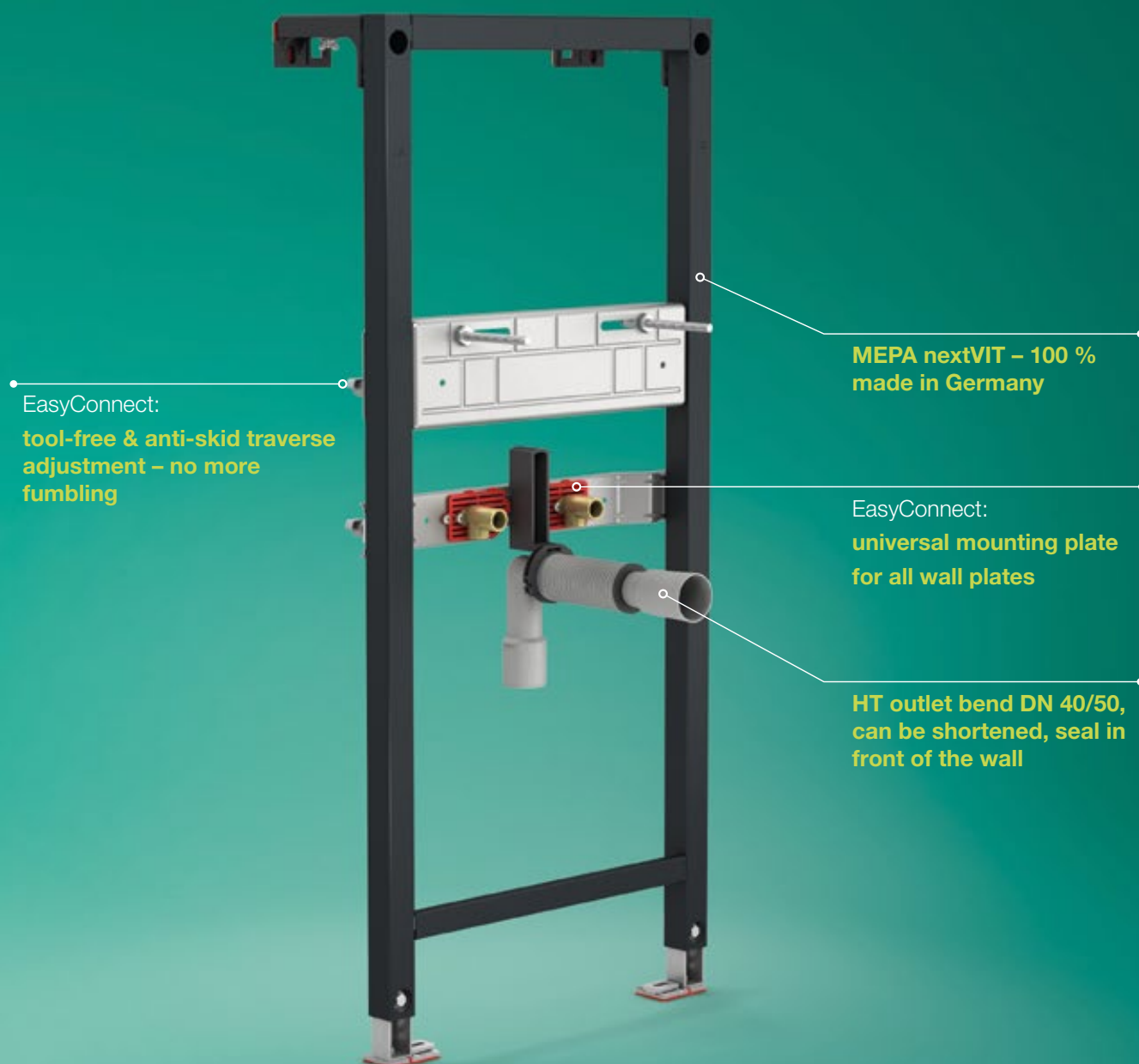
nextVIT is a well thought-out complete system for simple pre-wall installation. With pre-wall frames for every area of application and all installation variants, a reliable cistern with triple guarantee, a wide variety of flush plates and a rail system for faster construction progress.

nextVIT pre-wall frames

Optimised for ease of installation



Drill holes where they are needed - click-in grid wall brackets and construction protection box, cross-beam adjustment without slipping and fumbling, and installation of the flush plates without tools. With the new EasyConnect features for fast, tool-free installation and great flexibility in use; MEPA nextVIT ensures what you need on the construction site: simple, convenient and smooth installation. And no hassle with planning and installation. Our answer to full order books.



qr.mepa.de/1

» You want to experience nextVIT virtually straight away? Simply scan the code with your smart phone and let the **nextVIT video** convince you!

EasyConnect

This makes the assembly fun



Snap in instead of flip out

Our nextVIT wall brackets for single mounting are made of fibre-reinforced plastic and can be snapped into the element without tools for quick wall mounting in one easy movement. Highly break-resistant and load-stable. With tool-free depth adjustment. Better in detail.



qr.mepa.de/48

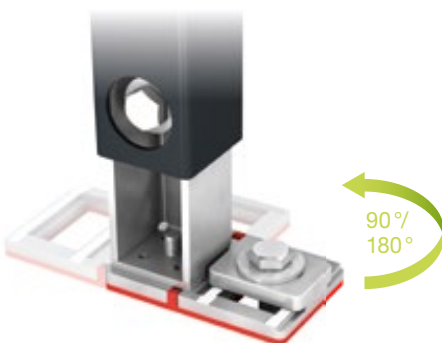


Revolutionary simple mounting to wall and floor

The nextVIT mounting plate can be moved vertically and offers a practical slotted hole horizontally. This allows you to drill holes in the wall and floor in an area 4 times larger than before. Better in detail.



qr.mepa.de/53



More flexibility due to smart base plate

By using nextVIT, you have a base for individual assembly, rail assembly, individual extension and lightweight upright construction. Its smart base plate can be rotated 90 deg. or 180 deg., allowing you to react flexibly to all conditions. And fits perfectly and stably into profiles UW 50 and UW 75. The entire base can be adjusted in height up to 240 mm without accessories. with accessories even to 480 mm. SFor maximum flexibility during installation. Better in detail.

NEW: tool-free assembly of the flush plates in less than 60 seconds

You only have to insert and turn the pusher rod. The new mounting frame is secured against falling out by practical knurled screws. And for older cisterns, there is a conversion kit that is inserted in less than 20 seconds.



Secure building protection with one click

When installing, every move saved counts. For this reason, we have equipped nextVIT pre-wall frames with a construction protection box that offers you click-in quick installation without screws. And can be removed just as easily at any time with a flick of the wrist. Better in detail.



qr.mepa.de/49



Hands free for quick connection

The nextVIT outlet bend rests on the lower crosspiece of all nextVIT WC pre-wall frames and can be adjusted in three depths. This makes the connection much easier. And, EasyConnect quick-mount clip ensures tool-free fixation in just a few seconds. Better in detail.



qr.mepa.de/50



Cross-beam adjustment without slipping and fumbling

The anti-slip crossbars on the washbasin and urinal can be moved easily with one hand to wherever you need them when using nextVIT. This is ensured by the integrated EasyConnect quick-mountclips. This saves an extra hand – and is real fun. Two wing screws are used to fix it in place without the need for tools. Better in detail.



qr.mepa.de/47



One wall pane holder for all pipe systems

The smart nextVIT universal mounting plate for washbasin, urinal and bidet fits the wall plates of all drinking water pipe systems. For easy mounting at the respective specified mounting points. Better in detail.



qr.mepa.de/52





100%
TESTED
QUALITY

Each cisterns is tested



10 YEARS
INSTALLER
GUARANTEE
5 YEARS
ON-SITE
SERVICE*
25 YEARS
SPARE PARTS
SUPPLY

for all cisterns A31/B31

MEPA

Für Installateure,
die nicht mit
dem Strom
schwimmen.

10 JAHRE
INSTALLATION-
GARANTIE
5 JAHRE
VOR-ORT-
SERVICE
25 JAHRE
ERSATZTEIL-
VERSORGUNG
für alle Toilettensitze A31/B31*



MEPA – Im Detail besser

powered by
REHAU

* applies in Germany and Austria

nextVIT cistern

More cannot be offered

The MEPA cistern A31/B31 offers you everything you need for quick, easy work and permanently satisfied customers: Safety and ease of installation, flexibility in use and an extremely simple electronics set-up. You can change the flushing technology with a flick of the wrist and the flushing flow throttle is already in place. One of the best cisterns on the market, fully assembled and ready to connect. With sophisticated technology and easy maintenance thanks to good accessibility and predominantly standardized spare parts. Better in detail!

Electronics upgrade
through simple insertion

Security
you can rely on

Flexibility
for easy work

100 % test when filled with water

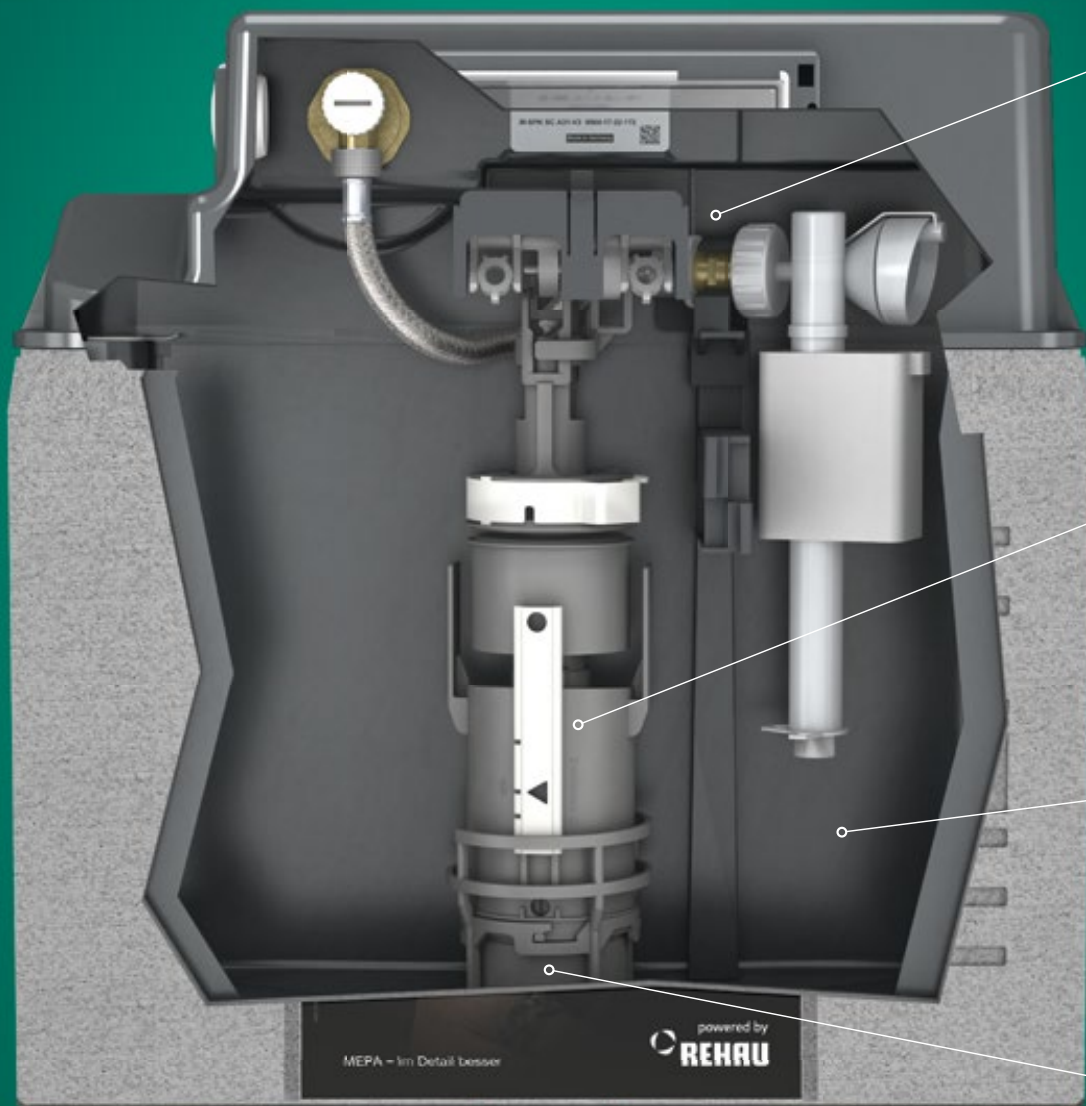
Every single MEPA cistern is filled with water before delivery and intensively tested for function, filling volume, setting of the filling valve and large and small flush volume of the drain valve. Longevity and functional reliability are guaranteed in 200,000 flush cycles according to EN14055. And every cistern is CE-tested.

Unrivalled triple guarantee!

Only MEPA offers you a triple guarantee on every cistern: 10-year installer guarantee on any part that may become faulty. 5-years guaranteed on-site service - this means that we will replace the component at your request directly at your customer's premises. Completely without effort and costs for you. And a 25-year availability guarantee on all spare parts - for long-term safety.

nextVIT cistern

Details that convince



Plug-and-play electronics upgrade

The integration of electronic, hygienic and barrier-free flushing is particularly easy with MEPA cisterns. The assembly is simply inserted or replaced by plug-and-play. Even after installation. In this way, you can meet customer requirements flexibly and without great effort.

Separately adjustable flush volumes

With MEPA cisterns, you can easily adjust the flush volume during installation or at any time afterwards by adjusting the drain valve. The factory setting is 6 l / 3 l. The large flush volume can be set between 5 l and 7 l, the small flush volume between 3 l and 4.5 l.



qr.mepa.de/15

Standardised interior - easy access

Your advantage: simple, efficient spare parts supply – and always the same movements during installation, regardless of the type of flushing. Plus particularly easy accessibility to all service-relevant areas. To change the basket, for example, all you need to do is turn the drain valve. Reinforced hose, filler and drain valve can be replaced without tools. Typical nextVIT.



qr.mepa.de/11

No splashing out from the ceramic

Due to the patented and pre-installed flushing flow throttle, which you can simply activate and continuously adjust as required, the flushing flow rate can be adjusted with a flick of the wrist and effectively prevent the water from splashing out of the ceramic.



qr.mepa.de/16

Revolutionary technology

nextVIT Air-WC

The nextVIT Air-WC from MEPA uses exhaust air instead of recirculated air for odour extraction - without maintenance and follow-up costs. This is particularly interesting for demanding customers; it sets you apart from competitors as an installer and pays off with a higher margin for the same installation effort. Ask your MEPA consultant about the attractive satisfaction guarantee, from which you benefit just as much as your customers!

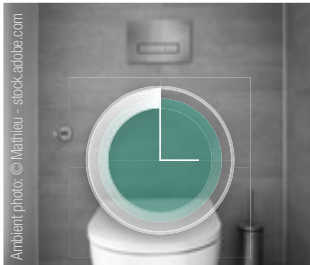


Find out more about
the MEPA Air-WC at
www.airwc.de

Equipment at its best

MEPA Flushing systems

The nextVIT pre-wall system also offers you everything in the way of flushing systems for WC and urinal. Standard and special solutions everything you need to satisfy your customers in the private and public field. And all are quickly installed or replaced by plug-and-play – at any time, even after installation.



WC hygiene flushing system 1062

We have developed the electronic WC hygiene flushing system for the public/semi-public sector or for use in the private multi-residential sector. Through automatically triggered flushing processes, it avoids long stagnation of the water in the pipe and thus undesirable germ formation. The flushing interval can be set to 24-hour intervals between 24 and 240 hours using a membrane keypad. One to ten consecutive flushes can be triggered for each hygiene flush. The flush volume can be set to between 6 and 9 l.



Drop chute for WC tabs

Our specialist for the proper use of cleaning tabs. With practical insertion slide in the inspection protection plate for convenient insertion after removing the flush plate. It can be retrofitted at any time in combination with the MEPA Zero flush plate.

Concealed urinal flush automation with infrared sensor

The nextVIT solution for maximum flexibility: Equip every urinal – including lid urinals – with intelligent touch-free flushing system in the most simple way. Periodic hygiene flush every 24 hours, cleaning stop and dynamic flush volume optimisation - all included. Includes flush time interval setting from 2 to 10 seconds and optional preflush 0 to 6 seconds when a person enters the infrared detection area. All settings can be made by using the integrated membrane keypad or without opening the front panel by IR remote control, which is included in the scope of delivery of the SC 925 and MEPA Orbit IR models. The automatic rinse quantity optimisation reduces rinsing time and water consumption when user frequency is high. There is a choice of three versions: the 825 flush-mounted automatic urinal flusher with polished stainless steel cover plate – easy to clean and vandal-proof. The new flush-mounted automatic urinal flusher 925. Or the MEPA Orbit urinal control with timeless-purist zinc die-cast front panel MEPA Orbit IR in white, matt chrome or bright chrome.



Automatic flusher Orbit IR



Automatic flusher SC 925

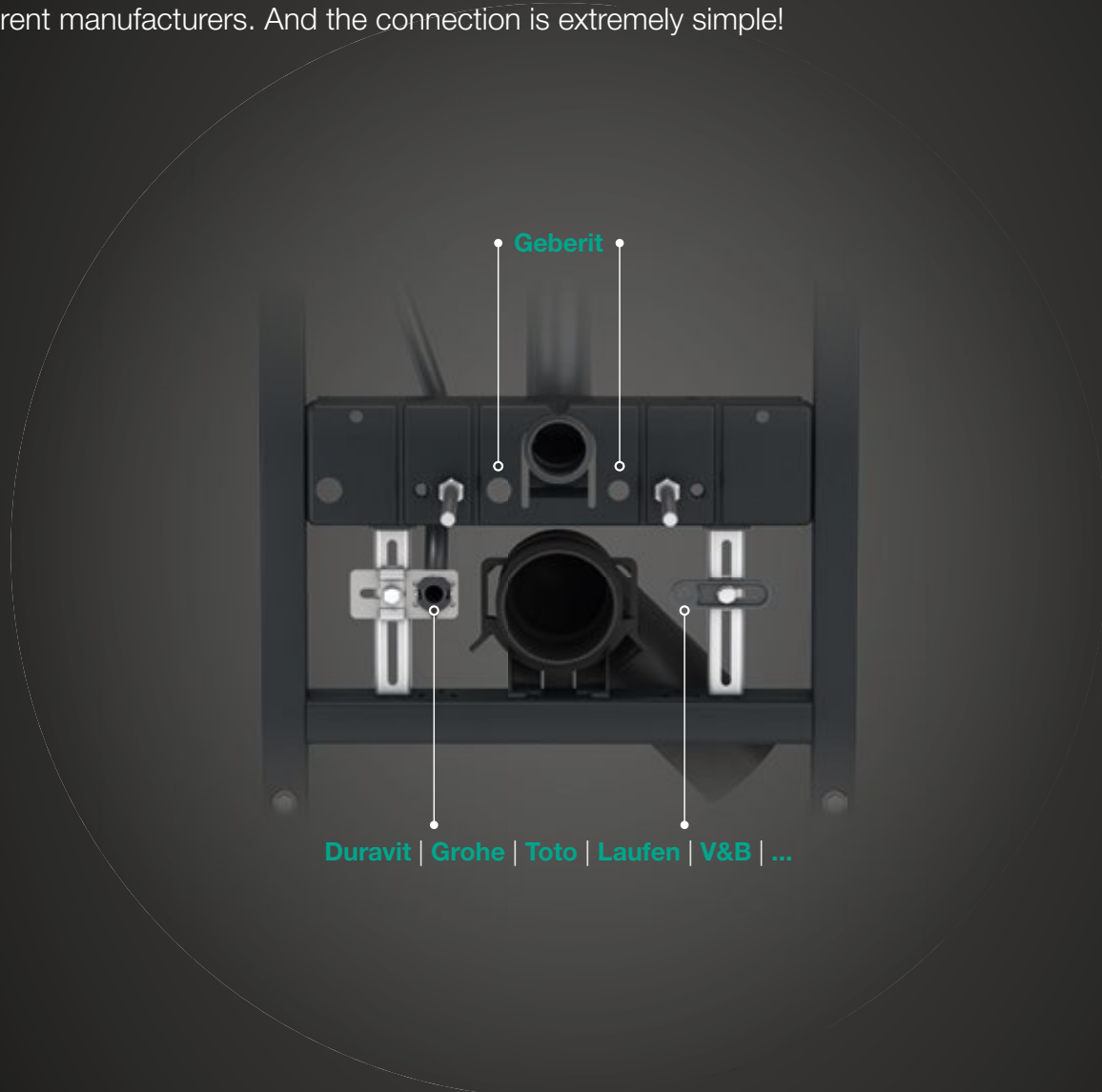


Automatic flusher 825

Our barrier-free nextVIT flushing systems can be viewed on page 39.

NEW: absolute flexibility for shower-WC systems

If your customers want to install a modern shower WC now or later, you are prepared perfectly with nextVIT. Universal connections and matching accessories enable every nextVIT pre-wall frame to be extended with a wide variety of shower WC systems from different manufacturers. And the connection is extremely simple!



Mounting rails for water and electrical connection

For easy installation of a wide range of shower WC systems, the nextVIT WC elements are now also available with two new mounting rails for simple water and electrical connection. This way you are equipped for all connection positions. And you can do the entire assembly mostly without tools - even as a perfectly prepared retrofit option.

Prefabricated water connection

The empty pipe for the water connection is easily fixed in the prefabricated receptacle on the connection plate and screwed into the top of the cistern. Alternatively, the water connection can also be implemented as a wall duct.

Easy electrical connection

For a clean electrical connection, we have fitted a connection eyelet through which the NYM-J 3x1.5 sqmm sheathed cable is easily passed.



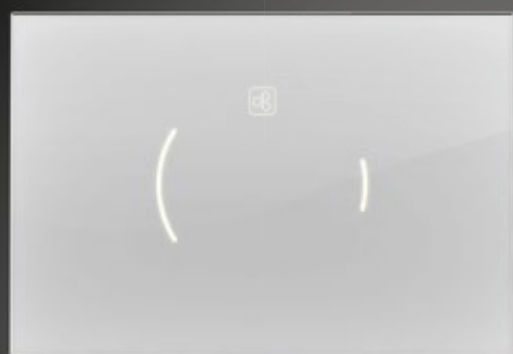
nextVIT stands out in front of the wall as well!

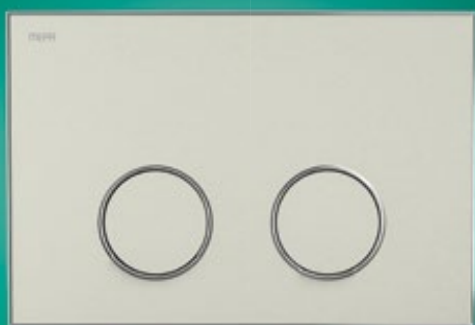
NextVIT includes a wide range of flush plates for WCs and urinals that leaves nothing to be desired. In plastic, stainless steel, glass, Laminam or glass laminate, classic or modern, with 2-flush, 1-flush or start/stop technology in the trendiest colours. Especially practical: All design variants fit perfectly on all current MEPA cisterns. Ideal conditions for you to meet customer wishes and tender requirements. And almost all of them can be mounted without tools in less than 60 seconds.



» EasyConnect -tool-free installation in under 60 seconds

This applies to almost all MEPA flush plates – and on older cisterns you only need 20 seconds more!



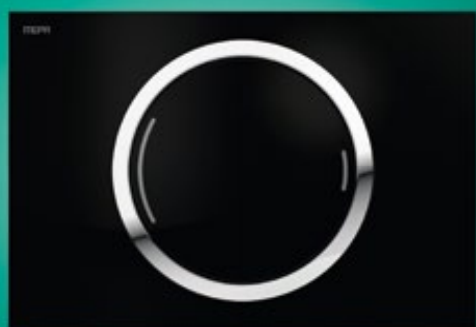
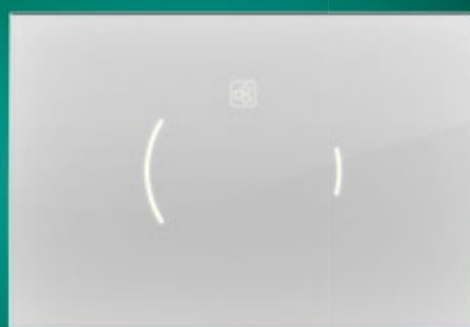


MEPA Frame – your individual design kit

The innovative MEPA Frame flush plate not only offers you a particularly balanced design with two equally sized buttons for the flush volumes: With 4 frames and 4 panel designs in modern colours that you can freely combine with each other, you have a total of 16 more options to meet individual customer wishes. And all this in a highly durable Laminam surface.

Zero Lumo – contactless innovation

Offer your customers a highly modern electronic design actuator made of high-quality glass without any mechanical parts, with a choice of manual or automatic activation for all A31 cisterns with Zero Lumo. Hygienically convincing and stylish.



MEPA Zero – innovative operating concept

The MEPA Zero flush plate is available in a variety of plastic or glass versions in white, black or silver and features an innovative operating concept that allows the user to select the small or large flush volume with just one button. The central chrome ring underlines the geometric design.

MEPA Orbit – attractive design variants

The design versions of the MEPA Orbit WC flush plates in steel, with glass surfaces in white, silver, and black, or with glass laminate surfaces in six modern matte colors, create special accents with depth effect and vibrancy. And this with water-saving dual flush technology.



Variable installation options

The Zero Lumo, MEPA Orbit und Zero flush plates can be installed in any way you want: surface-mounted, flush with the tiling or partly embedded. This gives you the greatest possible freedom when meeting customer requirements. Typical nextVIT!

overlying | surface:
plastic & Laminam



overlying | surface:
glas/steel/glas laminate



partly embedded | surface:
glas/steel/glas laminate



flush with the tiling | surface:
glass/steel/glas laminate & plastic



A standard element for all installation variants

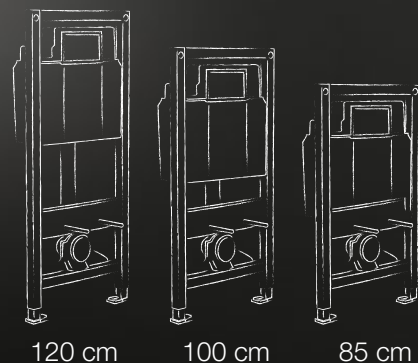
No matter what is required of you and what the specifications are: every nextVIT pre-wall frame fits. In individual mounting, lightweight stud construction, rail mounting and individual extension. For new construction and renovation in the public, semi-public and private sectors. In system heights of 120 cm, 100 cm and 85 cm. Even if you want to open up new business areas and, as a creative bathroom builder, want to implement elements of upscale bathroom construction for all customers with simple means. Equipped for everything with a standard element – that's nextVIT.



Individual mounting

In front of the solid wall, the EasyConnect features of the nextVIT pre-wall frames ensure quick project completion. Their great flexibility prepares you for any situation you find yourself in and thus provides a clear advantage in new construction as well as in renovation. Depending on the floor structure, you can extend the adjustable feet up to 240 mm, for example - with accessories even up to 480 mm.

One system for all installation heights





Lightweight frame stud construction

Lightweight frame stud walls are very much in vogue. Here too, nextVIT pre-wall frames with all EasyConnect advantages fit smoothly into any dry construction system and any timber stud wall and are simply fastened to the side of the profiles in the lightweight stud wall using self-tapping screws. The 90° rotatable base plate ensures a secure, firm stand in UW-50 and UW-75 profiles. And you'll find all the accessories you need for fixing concealed taps, barrier-free mounting frames, washbasins and many other tasks.

» Selected accessories for lightweight stand construction can be found on page 46.

Rail mounting

In addition to nextVIT C-rails in 5,000 mm we also provide you with ready-made sliding sets S 150 in 1,500 mm and S 300 in 3,000 mm with freely adjustable installation depths from 110 mm to 280 mm. If you want to screw on additional parts such as pipe clamps, simply click an EasyConnect quick-mount clip into the C-rail. For securing the mounting frames, you use our practical connector with a practical quick-release fastener, where you only need to tighten the screw.

» Selected accessories for rail installation can be found on page 42.



Individual installation

Use the nextVIT extension system and its extensive range of accessories to design floor-to-ceiling walls that flexibly adapt to any room situation and sloping roof, barrier-free solutions, room dividers or room planning around corners. Or open up completely new business areas in the private sector by implementing the entire bathroom, including drywall construction, for example, as a complete solution from a single source and on schedule. For predictably fast project completion and enthusiastic customers.

» Selected accessories for individual extension work can be found on page 42.



The nextVIT rail system – 100% MEPA, better in detail

The heart of the nextVIT extension system are the high-quality nextVIT C-rails, which are manufactured 100% in-house. Together with clever EasyConnect-features and perfectly supplementing accessories, they offer you all the possibilities for rail mounting and floor-to-ceiling or individual extension.



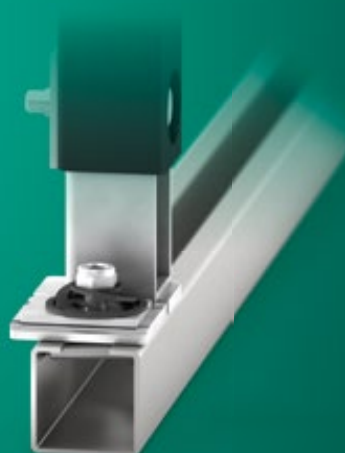
new
design



EasyConnect: nextVIT connector

You already know the better detail for easy rail installation and for individual extension: a connector that can be easily inserted into any nextVIT C-rail - insert and tighten with a flick of the wrist.

Now this technology is also available for fastening mounting frames or supports in C-rails*. In addition, we have optimised the base plate of our mounting frames for holding hammer-head screws



nextVIT threaded plate

For mounting nextVIT **ECO mounting frames** with object base plate and for fastening accessories such as pipe clamps. The threaded plate can be clamped into any nextVIT C-rail in two easy steps using the enclosed auxiliary tool. Holds independently where it is pushed – non-slip without holding on.



qr.mepa.de/7

Scan the code with your smartphone and watch the video to see how easy it is to click in a nextVIT threaded plate!

A connector for optimised prefabrication and fast assembly on site

In times of full order books and scarce skilled labour, prefabrication is becoming increasingly important because it keeps you flexible and lets you work more efficiently. For this reason, a functional connector in the extensive nextVIT range of accessories for rail assembly and individual extension is available, with which you can both prefabricate your mounting frames in a stable way and install them on site in the nextVIT rail system. This connector is now also used for securing mounting frames or supports in C-rails*.

The best of both worlds

In the nextVIT connector we have combined the positive features of its two predecessors. This way, you profit from a practical quick-release fastener, where you only have to tighten the screw. And you get a stable connection with almost no tools, which saves you a lot of work during prefabrication and on-site installation. And with just a few parts, you have full flexibility for a wide variety of connection situations.




Simple planking

The nextVIT extension system offers all the prerequisites for quick, simple planking with gypsum fibre, plasterboard and other materials, double-layered or single-layered or single-layered pre-punched.

Particularly practical: fast tacking with the MEPA Speedtacker. And if you lay gypsum fibreboards butt-jointed without joints, you save on filling in part-height pre-walls.

For planking accessories, see page 48.



Age-related impairments in particular are making more and more customers think about barrier-free living when furnishing their living environment – and not just when they are old. Anyone investing in a new bathroom today should be preparing for the future. This includes sanitary facilities that fit seamlessly into the barrier-free concept.

The barrier-free nextVIT washbasin frame is designed with an integrated concealed siphon to allow the necessary freedom of movement under the ceramic.

Barrier-free according to DIN

Easy with nextVIT

Barrier-free accessibility in the sanitary area is an absolute trendsetting factor. And not just for the seniors among your customers. With nextVIT, you are best possibly prepared here: Suitable solutions in the product range make you fit for barrier-free WCs and washbasins.

To set up barrier-free operation of the flushing system, the electronic nextVIT control is available barrier-free – either with operating buttons in the foldable support handle or by radio triggering.

The nextVIT pre-wall system offers you all the decisive elements you need for the standard-compliant installation of barrier-free sanitary facilities. And this is just as true for private households as it is for old people's homes or hospitals. The special nextVIT WC frame with raised seat height, for example, enables barrier-free installation in accordance with DIN 18040. It is slightly narrower than standard elements and thus leaves enough space for the prescribed lateral support grab rails.

Our barrier-free nextVIT flushing systems can be viewed on page 39.

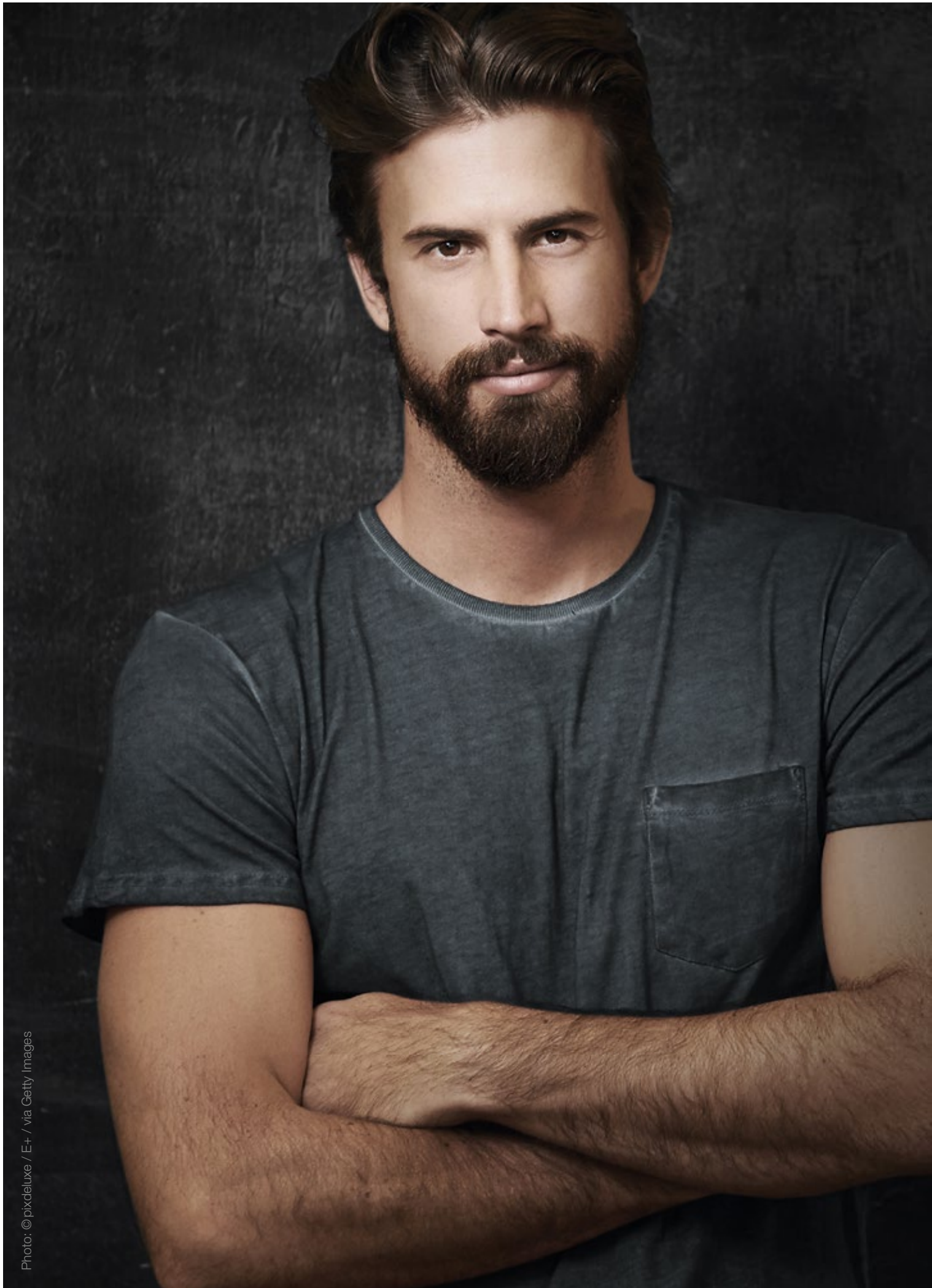


Photo: ©pixdeluxe / E+ / via Getty Images

**"Everything I need
in one system.
With details that no
one else has."**

nextVIT WC frames

» nextVIT WC frame cistern type B31 system height 85



Intended use

- pre-assembled mounting frame for wall-mounted WC
- for dry construction
- for single installation on a massive wall or into a lightweight frame stud wall
- for rail installation in front of a massive wall or on a lightweight frame stud wall

Properties

- system height 850 mm
- self-supporting mounting frame
- powder-coated profile frame
- height-adjustable footrests 0–240 mm with integrated anti-slip, base plates can be rotated, compensating for drilling errors
- suitable for wall mounting with hanger bolts M10
- mechanical actuation from the front or top

Art. No. 511105

» nextVIT WC frame cistern type B31 system height 100



Intended use

- pre-assembled mounting frame for wall-mounted WC
- for dry construction
- for single installation on a massive wall or into a lightweight frame stud wall
- for rail installation in front of a massive wall or on a lightweight frame stud wall

Properties

- system height 1.000 mm
- self-supporting mounting frame
- powder-coated profile frame
- height-adjustable footrests 0–240 mm with integrated anti-slip, base plates can be rotated, compensating for drilling errors
- suitable for wall mounting with hanger bolts M10
- mechanical actuation from the front or top

Art. No. 511106

» nextVIT WC frame cistern type A31



Intended use

- pre-assembled mounting frame for wall-mounted WC
- for dry construction
- for single installation on a massive wall or into a lightweight frame stud wall
- for rail installation in front of a massive wall or on a lightweight frame stud wall

Properties

- system height 1.200 mm
- self-supporting mounting frame
- powder-coated profile frame
- height-adjustable footrests 0–240 mm with integrated anti-slip, base plates can be rotated, compensating for drilling errors
- suitable for wall mounting with hanger bolts M10
- mechanical front actuation

Art. No. 514105

» nextVIT Air-WC frame cistern type A31 fan - manual release



Intended use

- pre-assembled mounting frame for wall-mounted WC
- for odour extraction
- for dry construction
- for single installation on a massive wall or into a lightweight frame stud wall
- for rail installation in front of a massive wall or on a lightweight frame stud wall

Properties

- system height 1.200 mm
- self-supporting mounting frame
- powder-coated profile frame
- height-adjustable footrests 0 - 240 mm with integrated anti-slip, base plates can be rotated, compensating for drilling errors
- suitable for wall mounting with hanger bolts M10
- mechanical front actuation

Art. No. 514820



» nextVIT Air-WC frame cistern type A31 fan - automatic release

Intended use

- pre-assembled mounting frame for wall-mounted WC
- for odour extraction
- for dry construction
- for single installation on a massive wall or into a lightweight frame stud wall
- for rail installation in front of a massive wall or on a lightweight frame stud wall

Properties

- system height 1.200 mm
- self-supporting mounting frame
- powder-coated profile frame
- height-adjustable footrests 0–240 mm with integrated anti-slip, base plates can be rotated, compensating for drilling errors
- suitable for wall mounting with hanger bolts M10
- mechanical front actuation

Art. No. 514821



» nextVIT step WC frame cistern type A31

Intended use

- pre-assembled mounting frame for wall-mounted WC
- for subsequent WC height adjustment
- for dry construction
- for single installation on a massive wall or into a lightweight frame stud wall
- for rail installation in front of a massive wall or on a lightweight frame stud wall

Properties

- system height 1.200 mm
- self-supporting mounting frame
- powder-coated profile frame
- height-adjustable footrests 0–240 mm with integrated anti-slip, base plates can be rotated, compensating for drilling errors
- suitable for wall mounting with hanger bolts M10
- mechanical front actuation

Art. No. 514813



» nextVIT WC frame cistern type A31 - odour extraction connection

Intended use

- pre-assembled mounting frame for wall-mounted WC
- for connecting an external odour extraction unit
- for dry construction
- for single installation on a massive wall or into a lightweight frame stud wall
- for rail installation in front of a massive wall or on a lightweight frame stud wall

Properties

- system height 1.200 mm
- self-supporting mounting frame
- powder-coated profile frame
- height-adjustable footrests 0–240 mm with integrated anti-slip, base plates can be rotated, compensating for drilling errors
- suitable for wall mounting with hanger bolts M10
- mechanical front actuation

Art. No. 514822



» nextVIT stand-up WC frame cistern type A31 - baby/children

Intended use

- pre-assembled mounting frame for child-friendly stand-up WC
- for dry construction
- for single installation on a massive wall or into a lightweight frame stud wall
- for rail installation in front of a massive wall or on a lightweight frame stud wall

Properties

- system height 1.200 mm
- self-supporting mounting frame
- powder-coated profile frame
- height-adjustable footrests 0–240 mm with integrated anti-slip, base plates can be rotated, compensating for drilling errors
- suitable for wall mounting with hanger bolts M10
- mechanical front actuation

Art. No. 514812

nextVIT WC frames



» nextVIT WC frame cistern type A31 – shower WC

Intended use

- pre-assembled mounting frame for wall-mounted WC
- for dry construction
- for single installation on a massive wall or into a lightweight frame stud wall
- for rail installation in front of a massive wall or on a lightweight frame stud wall
- for installation of a water and electrical connection to connect a shower WC of the manufacturer Geberit, Duravit or Toto

Properties

- system height 1.200 mm
- self-supporting mounting frame
- powder-coated profile frame
- height-adjustable footrests 0–240 mm with integrated anti-slip, base plates can be rotated
- suitable for wall mounting with hanger bolts M10
- mechanical front actuation

Art. No. 514814



» nextVIT WC frame cistern type P31 ECO

NEW

Intended use

- pre-assembled mounting frame for wall-mounted WC
- for dry construction
- for single installation on a massive wall or into a lightweight frame stud wall
- for rail installation in front of a massive wall or on a lightweight frame stud wall

Properties

- system height 1.200 mm
- self-supporting mounting frame
- sendzimir galvanized profile frame
- height-adjustable feet supports 0–240 mm, base plates can be rotated
- suitable for wall mounting with hanger bolts M10
- mechanical front actuation

Art. No. 512341



» nextVIT corner WC frame cistern type E31

Intended use

- pre-assembled mounting frame for wall-mounted WC
- for mounting in the corner of a room
- for dry construction
- for single installation in front of a massive wall

Properties

- system height 1.200 mm
- self-supporting mounting frame
- powder-coated profile frame
- height-adjustable feet supports 0–190 mm
- suitable for wall mounting with hanger bolts M10
- mechanical front actuation

Art. No. 514823



nextVIT washbasin frames



» nextVIT washbasin frame single-hole mixer

Intended use

- pre-assembled mounting frame for single-hole washbasin mixer
- for dry construction
- for single installation on a massive wall or into a lightweight frame stud wall
- for rail installation in front of a massive wall or on a lightweight frame stud wall

Properties

- system height 1.200 mm
- self-supporting mounting frame
- powder-coated profile frame
- height-adjustable footrests 0–240 mm with integrated anti-slip, base plates can be rotated, compensating for drilling errors
- suitable for wall mounting with hanger bolts M10

Art. No. 521016



» nextVIT washbasin frame single-hole mixer without wall plates

Intended use

- pre-assembled mounting frame for single-hole washbasin mixer
- for dry construction
- for single installation on a massive wall or into a lightweight frame stud wall
- for rail installation in front of a massive wall or on a lightweight frame stud wall

Properties

- system height 1.200 mm
- self-supporting mounting frame
- powder-coated profile frame
- height-adjustable footrests 0–240 mm with integrated anti-slip, base plates can be rotated, compensating for drilling errors
- suitable for wall mounting with hanger bolts M10

Art. No. 521017



» nextVIT washbasin frame single-hole mixer ECO

Intended use

- pre-assembled mounting frame for single-hole washbasin mixer
- for dry construction
- for single installation on a massive wall or into a lightweight frame stud wall
- for rail installation in front of a massive wall or on a lightweight frame stud wall

Properties

- system height 1.200 mm
- self-supporting mounting frame
- sendzimir galvanized profile frame
- height-adjustable feet supports 0–240 mm, base plates can be rotated
- suitable for wall mounting with hanger bolts M10

Art. No. 521023

NEW



» nextVIT washbasin frame single-hole mixer ECO Wooden strip

Intended use

- pre-assembled mounting frame for single-hole washbasin mixer
- for dry construction
- for single installation on a massive wall or into a lightweight frame stud wall
- for rail installation in front of a massive wall or on a lightweight frame stud wall

Properties

- system height 1.200 mm
- self-supporting mounting frame
- sendzimir galvanized profile frame
- height-adjustable feet supports 0–240 mm, base plates can be rotated
- suitable for wall mounting with hanger bolts M10

Art. No. 521024

NEW



» nextVIT washbasin frame wall mixer/spout basin

Intended use

- prefabricated mounting frame for wall-mounted washbasin mixer and sink basin
- for dry construction
- for single installation on a massive wall or into a lightweight frame stud wall
- for rail installation in front of a massive wall or on a lightweight frame stud wall

Properties

- system height 1.200 mm
- self-supporting mounting frame
- powder-coated profile frame
- height-adjustable footrests 0–240 mm with integrated anti-slip, base plates can be rotated, compensating for drilling errors
- suitable for wall mounting with hanger bolts M10

Art. No. 522002



» nextVIT washbasin frame single-hole mixer - water meter section WZ2 gunmetal

Intended use

- pre-assembled mounting frame for single-hole washbasin mixer
- for installation of measuring capsules KOAX G2
- for dry construction
- for single installation on a massive wall or into a lightweight frame stud wall
- for rail installation in front of a massive wall or on a lightweight frame stud wall

Properties

- system height 1.200 mm
- self-supporting mounting frame
- powder-coated profile frame
- height-adjustable footrests 0–240 mm with integrated anti-slip, base plates can be rotated, compensating for drilling errors
- suitable for wall mounting with hanger bolts M10

Art. No. 521027



» nextVIT washbasin frame single-hole mixer - furniture washbasin

Intended use

- pre-assembled mounting frame for furniture washbasin with single-hole mixer
- for dry construction
- for single installation on a massive wall or into a lightweight frame stud wall
- for rail installation in front of a massive wall or on a lightweight frame stud wall

Properties

- system height 1.200 mm
- self-supporting mounting frame
- powder-coated profile frame
- height-adjustable footrests 0–240 mm with integrated anti-slip, base plates can be rotated, compensating for drilling errors
- suitable for wall mounting with hanger bolts M10

Art. No. 521022

nextVIT urinal frames



» nextVIT urinal element concealed flushing system electronic/mechanical

Intended use

- pre-assembled mounting frame for urinal with concealed supply from behind
- for combination with electronic or mechanic concealed urinal flushing system
- for dry construction
- for single installation on a massive wall or into a lightweight frame stud wall
- for rail installation in front of a massive wall or on a lightweight frame stud wall

Properties

- system height 1.200 mm
- self-supporting mounting frame
- powder-coated profile frame
- height-adjustable footrests 0–240 mm with integrated anti-slip, base plates can be rotated, compensating for drilling errors
- suitable for wall mounting with hanger bolts M10

Art. No. 532012



» nextVIT urinal element surface-mounted flushing system electronic/mechanical

Intended use

- pre-assembled mounting frame for urinal with inlet from top
- for combination with electronic or mechanic surface-mounted urinal flushing system
- for dry construction
- for single installation on a massive wall or into a lightweight frame stud wall
- for rail installation in front of a massive wall or on a lightweight frame stud wall

Properties

- system height 1.200 mm
- self-supporting mounting frame
- powder-coated profile frame
- height-adjustable footrests 0–240 mm with integrated anti-slip, base plates can be rotated, compensating for drilling errors
- suitable for wall mounting with hanger bolts M10

Art. No. 530002



» nextVIT urinal element concealed flushing system K3 electronic

Intended use

- pre-assembled mounting frame for urinal with concealed supply from behind
- for combination with electronic, concealed flush-mounted urinal control Sanicontrol K3
- for dry construction
- for single installation on a massive wall or into a lightweight frame stud wall
- for rail installation in front of a massive wall or on a lightweight frame stud wall

Properties

- system height 1.200 mm
- self-supporting mounting frame
- powder-coated profile frame
- height-adjustable footrests 0–240 mm with integrated anti-slip, base plates can be rotated, compensating for drilling errors
- suitable for wall mounting with hanger bolts M10

Art. No. 532013



nextVIT barrier-free mounting frames and components

Barrier-free mounting frames



» nextVIT WC frame cistern type A31 – barrier-free

Intended use

- pre-assembled mounting frame for barrier-free, wall-mounted WC
- for installation according to DIN 18040
- for mounting WC ceramics with extended projection up to 700 mm
- for dry construction
- for single installation on a massive wall or into a lightweight frame stud wall
- for rail installation in front of a massive wall or on a lightweight frame stud wall

Properties

- system height 1.200 mm
- self-supporting mounting frame
- powder-coated profile frame
- height-adjustable footrests 0–240 mm with integrated anti-slip, base plates can be rotated, compensating for drilling errors
- mechanical front actuation
- suitable for wall mounting with hanger bolts M10

Art. No. 513110



» nextVIT WC frame cistern type A31 – barrier-free with foldable support handle element

Intended use

- pre-assembled mounting frame for barrier-free, wall-mounted WC
- for installation according to DIN 18040
- for mounting WC ceramics with extended projection up to 700 mm
- for mounting support or folding support handles
- for dry construction
- for single installation on a massive wall or into a lightweight frame stud wall
- for rail installation in front of a massive wall or on a lightweight frame stud wall

Properties

- system height 1.200 mm
- self-supporting mounting frame
- powder-coated profile frame
- height-adjustable footrests 0–240 mm with integrated anti-slip, base plates can be rotated, compensating for drilling errors
- mechanical front actuation
- suitable for wall mounting with hanger bolts M10

Art. No. 513111



» nextVIT washbasin frame single-hole / wall mixer – barrier-free

Intended use

- pre-assembled mounting frame for barrier-free single-hole or wall-mounted washbasin mixer
- for installation according to DIN 18040
- for dry construction
- for single installation on a massive wall or into a lightweight frame stud wall
- for rail installation in front of a massive wall or on a lightweight frame stud wall

Properties

- system height 1.200 mm
- self-supporting mounting frame
- powder-coated profile frame
- height-adjustable footrests 0–240 mm with integrated anti-slip, base plates can be rotated, compensating for drilling errors
- suitable for wall mounting with hanger bolts M10

Art. No. 524002

Accessory, barrier-free



» nextVIT support and foldable support handle for WC and washbasin

The practical pre-assembled mounting frame for support or foldable support handles for installation in accordance with DIN 18040 with a system height of 1,200 mm. Versatile use in drywall installation or single installation and rail installation in front of a solid wall or in a lightweight stud wall. Self-supporting mounting frame with powder-coated support. Height-adjustable footrests 0–240 mm with integrated anti-slip. Suitable for wall mounting with hanger bolts M10.

Art. No. 549016

NEW



» nextVIT wall bracket single mounting barrier-free

For attaching barrier-free mounting frames in front of a solid wall or in a lightweight stud wall or for drywall installation.

Art. No. 541031



» nextVIT barrier-free standard WC extension

For barrier-free installation of WC frames in front of a solid wall and for installation of WC ceramics with extended projection up to 700 mm.

Art. No. 542011



» nextVIT WC structural work set foldable support handle E-button

For assembly preparation of wired, foldable support rails with remote trigger of the MEPA cisterns type A31.

Art. No. 548016

Barrier-free flushing systems



» Barrier-free flushing system 1061 with E-button

For foldable support handles with E-button, compatible with all standard systems. Particularly easy installation or replacement with a few simple steps by plug-and-play. The lifting mechanism of the servo motor enables automatic, adjustable hygiene flushing at the same time. Ideal for all smaller and larger projects in the public and private sectors. Mains operation or battery operation as well as combination with the entire nextVIT flush plate range for the nextVIT concealed cistern A31 possible.



» Barrier-free flushing system 1065 with radio pushbutton

The Sanicontrol 1065, which is equipped with state-of-the-art radio technology, can be combined with almost every foldable support rail systems. Easy to install by plug-and-play, optionally available with mains or battery operation and expandable with additional functions due to an integrated connection option. Can be combined with all flush plates from the MEPA Zero, MEPA Orbit and MEPA Sun series. The ideal barrier-free solution for all project volumes.

nextVIT bidet element



» nextVIT bidet element

Intended use

- pre-assembled mounting frame for wall-mounted bidet
- for dry construction
- for single installation on a massive wall or into a lightweight frame stud wall
- for rail installation in front of a massive wall or on a lightweight frame stud wall

Properties

- system height 1.200 mm
- self-supporting mounting frame
- powder-coated profile frame
- height-adjustable footrests 0–240 mm with integrated anti-slip, base plates can be rotated, compensating for drilling errors

Art. No. 549012





Our new products: **MEPA Orbit with matt glass laminate surface**

The matte glass laminate surface impresses with its soft-touch feel, anti-fingerprint properties, high scratch resistance, and easy cleaning. Additionally, it is 10 times more shatterproof and 50% lighter than real glass.

Six modern matt colours Bianco, Piano, Sabbia, Titanio, Terriccio and Opal reflect the spirit of the times and modern design.



Well thought-out nextVIT accessory programme

nextVIT as an overall system is inspired by your work. We have taken a close look at where the crucial tasks are and where we can make installation even easier for you. This has also resulted in an extensive range of accessories that make your work easier, especially in prefabrication, rail installation and individual finishing, and ensure great flexibility in design. We will show you a selection of the most practical details here. The entire nextVIT range of accessories can be found in the MEPA product catalogue. Please ask us!

Accessories for individual installation



» nextVIT wall bracket single mounting

The wall bracket which can be clicked in for individual installation is highly break-resistant, load-stable and promotes sound protection. Particularly easy during installation is the tool-free locking into place in the element. Depth adjustable from 100-250 mm using a wing nut. The vertically movable mounting plate permit flexible placement of the drill holes.

Art. No. 541023

NEW



» nextVIT wall bracket Individual mounting ECO

Especially for mounting ECO mounting frames with object base plate on the C-rail of the extension system.

Art. No. 541027

Selected accessories Rail installation / customised expansion

NEW

» nextVIT C-rail 500



The basis: punched C-rails made of sendzimir-galvanised steel in a length of 500 cm for individual cutting. For easy attachment of nextVIT pre-wall frames in rail mounting construction in front of solid or lightweight frame stud walls.

Art. No. 541030

NEW

» nextVIT C-rail set S 150 and S 300



Particularly practical for rail installation in front of solid or lightweight frame stud walls: ready-configured installation sets of 150 cm or 300 cm in length with infinitely variable installation depth adjustment between 110 mm and 280 mm.

Art.-No. 541028 / Art.-No. 541029

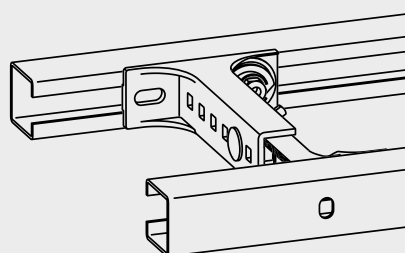
NEW

» nextVIT wall brackets C-rail EasyConnect



We have developed this wall bracket especially for mounting nextVIT pre-wall frames on the C-rail of the extension system: thanks to the EasyConnect quick-release system, it is extremely easy to attach and the depth is continuously adjustable from 110 mm to 280 mm.

Art. No. 542049



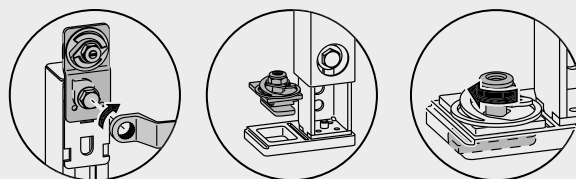
NEW

» nextVIT mounting set C-rail EasyConnect



Your smart assistant for extremely simple connection of mounting frames or supports with a C-rail. The same applies here: Simply click into place and fasten with a flick of the wrist.

Art. No. 542050



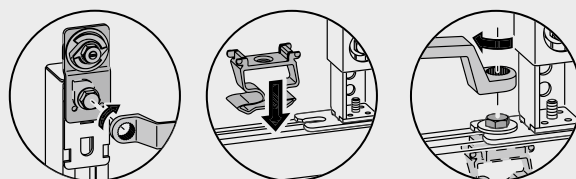
NEW

» nextVIT mounting set C-rail ECO EasyConnect



Easy to click in - especially for connecting ECO mounting frames with object base plate with a C-profile front rail.

Art. No. 542051

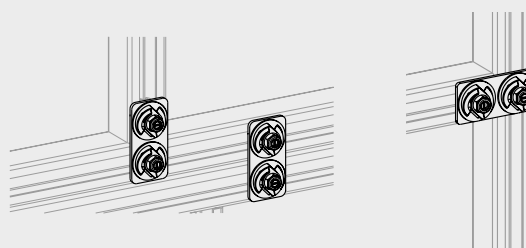


» nextVIT connector C-rail EasyConnect



For connecting nextVIT C-profiles. Extremely fast and stable fastening thanks to EasyConnect technology.

Art. No. 542040

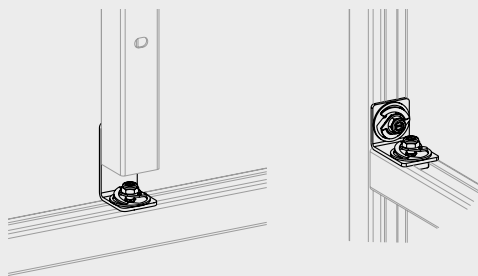




» nextVIT universal connector C-rail EasyConnect

Our secret weapon in rail assembly and individual extension for the simple installation of 90 deg. angles and for labour-saving fastening of extension rails to walls and floors.

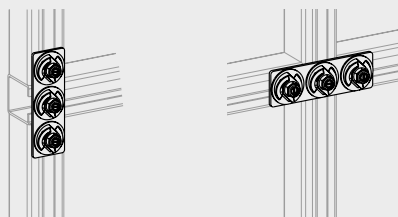
Art. No. 542041



» nextVIT cross connector C-rail EasyConnect

For particularly simple and quick production of cross-shaped connections of vertical and horizontal C-rails – using practical EasyConnect technology, of course.

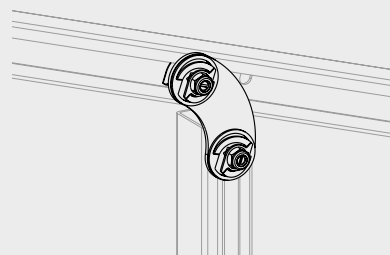
Art. No. 542042



» nextVIT joint angle C-rail EasyConnect

The all-rounder for creating angled connections with nextVIT C-rails: freely adjustable for angles from 30 deg. to 180 deg. and therefore perfect for individual extension.

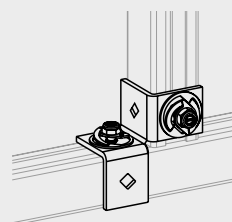
Art. No. 542043



» nextVIT 3D connector C-rail EasyConnect

For easy right-angled connection of vertical and horizontal C-rails – easily connected using the integrated EasyConnect technology, tightened and the angle is in place!

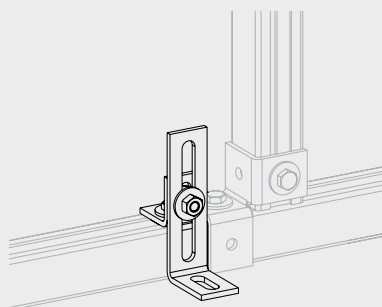
Art. No. 542044



» nextVIT wall-floor angle EasyConnect prefabrication

For particularly quick and easy attachment and alignment of prefabricated MEPA pre-wall systems to the building structure and for levelling out construction differences – using practical EasyConnect technology, of course.

Art. No. 542045

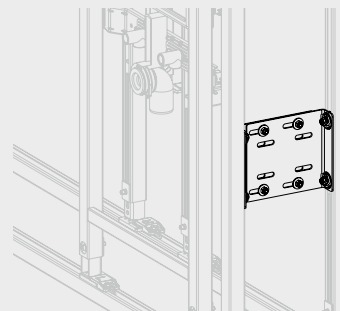




» nextVIT structural kit partition wall/ room divider EasyConnect

Two mounting plates using EasyConnect technology - making the bracing of free-standing partition wall constructions in individual extensions a breeze.

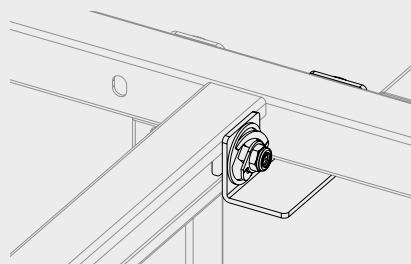
Art. No. 542046



» nextVIT connector set partition wall/ room divider EasyConnect

For right-angled connection of a partition wall or room divider to a MEPA C-rail installation

Art. No. 542047



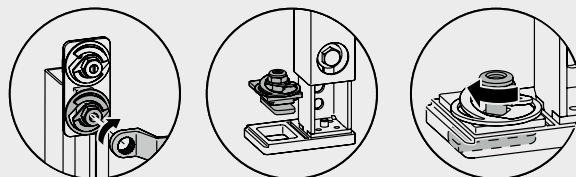
NEW

» nextVIT conversion set C-rail System construction height 85-100 EasyConnect



For connecting mounting frames or supports to a C-profile front and bottom rail and for connecting mounting frames or supports that have been shortened in height.

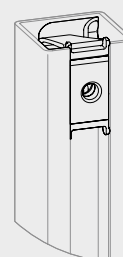
Art. No. 542052



» nextVIT threaded plate C-rail M8/M10

We have developed nextVIT C-rail threaded plate for pipe clamps and everything else that you want to fasten with a screw connection in the individual extension: It simply clicks into the C-rail and holds by itself without slipping wherever you push it.

Art.-No. 542027 / Art.-No. 542028



» nextVIT support

Powder-coated support for bridging gaps > 580 mm and as initial and final support in rail assembly in front of a solid or in front of a stud lightweight wall. System height 1,200 mm with height-adjustable footrests 0-240 mm.

Art. No. 541022

NEW

» nextVIT element / column extension 480 EasyConnect



To extend the height adjustment of elements and supports by 240 mm for floor construction heights up to 480 mm.

Art. No. 546019

Selected accessories – lightweight stud construction



» nextVIT mounting module - lightweight frame stud construction shower/bathtub tap concealed

Pre-assembled mounting plate for concealed shower tray or bathtub tap, for drywall installation, for individual installation in a lightweight frame stud wall. Infinitely height-adjustable and depth-adjustable from 65 mm to 105 mm.

Art. No. 547004



» nextVIT mounting module - lightweight frame stud construction washbasin element for single-hole mixer

A pre-assembled connection crossbeam for single-hole washbasin mixer for individual installation in a lightweight stud wall or for drywall installation.

Art. No. 547009



» nextVIT mounting module - lightweight frame stud construction heavy loads

Equipped for all eventualities: With this pre-assembled connection crossbeam, you can easily and safely attach heavy loads such as bathroom cabinets when installing them individually in a lightweight frame stud wall or in drywall installation.

Art. No. 547001

Accessories – washbasin with water meter section



» nextVIT water meter ready-mounted set concealed valve fix

Ready-to-mount set for the concealed valve of a water meter installation block. Can be used with planking thicknesses including tiling from min. 20 mm to max. 28 mm; spindle extension: Fixed length, cannot be shortened.

Art. No. 548018



» nextVIT water meter ready-to-mount set – concealed valve variable

Ready-to-mount set for the concealed valve of a water meter installation block. Can be used with planking thicknesses including tiling from min. 30 mm to max. 65 mm; spindle extension: variable length, can be shortened.

Art. No. 548019

Special accessories – shower WC



» nextVIT connection shower toilet universal

For installation of a water and electrical connection to connect a shower WC.

Art. No. 548021



» nextVIT water connection shower WC direct connection

For installation of a water connection to connect a shower WC.

Art. No. 548022



» nextVIT shower-WC connection Geberit

Used to install a water and electrical connection for a shower WC – for water and electrical connection 2.1 in. (5.5 cm) from the centre line.

Art. No. 548023



» nextVIT water connection set - shower WC

Used to install a water connection for fitting a shower WC – for concealed cisterns with pre-mounted empty pipe for the water connection.

Art. No. 548024



» Shower WC direct connection

Used to install a water and electrical connection for a Duravit SensoWash shower WC.

Art. No. 548014

Selected accessories - upgrade



» nextVIT support set - WC ceramics

For additional support of WC ceramics with reduced support surface < 200 mm (support surface = dimension from the centre of the fixing bolt of the WC ceramics unit to the lower edge of the WC ceramics unit) for an element for wall-hung WC with the holders provided for this purpose.

Art. No. 546023

Simple planking

nextVIT provides you with all the units needed for quick, simple planking with gypsum fibre, plasterboard and other materials, double-layered or single-layered or single-layered pre-cut. Especially practical: When laying gypsum fibreboards jointless, you can simply staple them with the MEPA Speedtacker and save on filling.

Selected accessories – planking



» nextVIT gypsum fibre board

For single-layer planking of a pre-wall installation in rail mounting.

Art. No. 545026 (2 units)
Art. No. 545027 (25 units)



» nextVIT gypsum fibre board WC

For single-layer planking of a WC pre-wall installation in rail mounting.

Art. No. 545022 (1 unit)
Art. No. 545023 (10 units)



» nextVIT gypsum fibre board washbasin

For single-layer planking of a washbasin pre-wall installation using rail mounting.

Art. No. 545024 (1 unit)
Art. No. 545025 (10 units)



» nextVIT screws gypsum fibre boards self-tapping

In this way, screwing gypsum fibreboards together while planking becomes a simple matter.

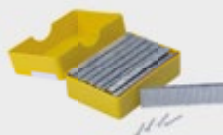
Art. No. 545034



» nextVIT Speedtacker gypsum fibre boards

Your turbo tool for fast, uncomplicated pre-wall cladding with gypsum fibreboard.

Art. No. 545010



» nextVIT Speedtacker nails

The appropriate nails for the nextVIT Speedtacker can be ordered in a pack of 1,000.

Art. No. 545033



» nextVIT filler cladding panels

For plastering gypsum board and gypsum fiber coverings.

Art. No. 545015

nextVIT sound insulation

Selected accessories – sound insulation



» nextVIT sound insulation set single installation

For sound-insulating installation of elements and supports in individual fitting.

Art. No. 548020



» nextVIT sound insulation tape C-rail

For sound insulation between C-rail and wall or floor.

Art. No. 548010



» nextVIT sound insulation mat WC/bidet

For additional sound insulation between ceramic body and wall for wall-mounted WC or wall-mounted bidet.

Art. No. 548004



» nextVIT sound insulation mat washbasin

For additional sound insulation between ceramic body and wall, for washbasin up to a width of 750 mm.

Art. No. 548005



» nextVIT sound insulation set, universal

For additional sound insulation between ceramic body and wall, for all ceramic bodies.

Art. No. 548006

Dedicated MEPA quality service

nextVIT also includes reliable quality service from our own MEPA customer service. With a powerful team, always on duty, personal, committed and nearby. Getting spare parts for cisterns is quick and easy – for 25 years, guaranteed. And in MEPA learning workshop in Rheinbreitbach, we show you all the tricks of the trade that will make installing nextVIT even faster and more efficient. Better in detail.

Go and get the MEPA service app

We do a lot to make your work easier. The free MEPA service app is one of them. This helps you directly on site – whether you are installing a mounting frame or a pre-wall frame. Our highlight for pre-wall installation is the really practical MEPA spare parts finder for cisterns and flush plates. It intuitively guides you to exactly the part you will need in just a few steps. Even offline, on site during installation. Simply scan and download it to your smartphone right here!



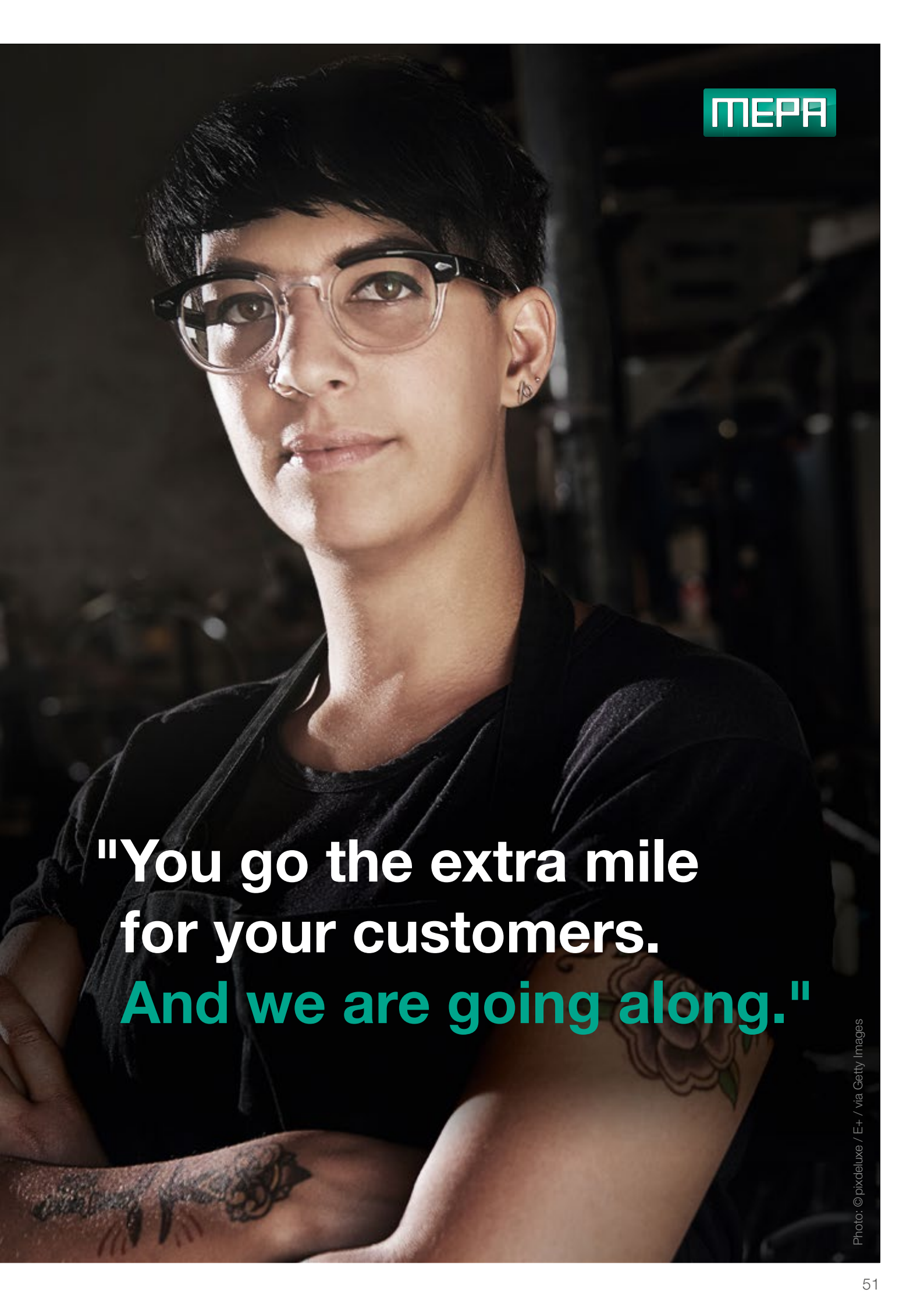
qr.mepa.de/23



qr.mepa.de/21



» You want to know more about nextVIT or make your online consultation appointment?
Well, write to us: nextvit@mepa.de

The background of the entire page is a photograph of a person with short dark hair, wearing round glasses and a dark t-shirt. They have visible tattoos on their arms, including a large floral design on the right forearm and a smaller one on the left. The person is looking directly at the camera with a slight smile. The background is dark and out of focus, suggesting an industrial or workshop setting.

**"You go the extra mile
for your customers.
And we are going along."**

» MEPA – better in detail

MEPA – Pauli und Menden GmbH

Rolandsecker Weg 37 | D-53619 Rheinbreitbach
Tel. +49(0)22 24/9 29 - 0 | Fax +49(0)22 24/9 29 - 1 49
www.mepa.de | info@mepa.de

